

WHAT IS THE PACE STRATEGY?

First, an evaluation helps us determine if there are deficiencies in a child's processing skills. If a problem exists, a training program will be developed to meet that child's individual needs. Once enrolled in PACE, a child will work on specific goals with a professional trainer who will conduct carefully sequenced activities, strengthening weak areas to bring the learning system up to par. The training is designed to achieve maximum results in the shortest period of time.

PACE Develops:

- Attention
- Auditory Processing
- Comprehension
- Logic & Reasoning
- Memory
- Planning
- Processing Speed
- Visual Processing

THE TIME TO ACT IS NOW!

If your child is between the ages of six and nineteen, call us today to set up an appointment for a screening. Any uncorrected learning problems can have long-term consequences. When diagnosed early, PACE can significantly improve and often alleviate the problem entirely.

Can you afford to pass up this opportunity to help your child? Call today.



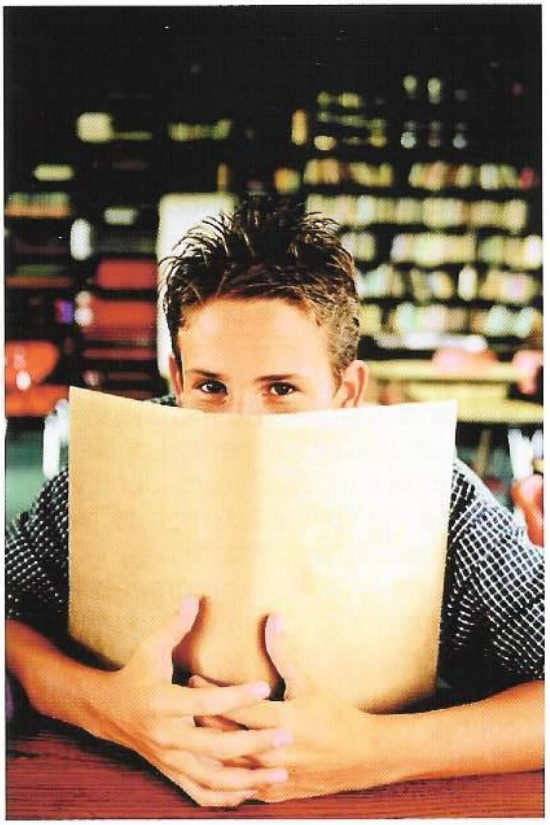
Building Better Learners, One Skill at a Time.

Offered by:
The Alcott Center
For Cognitive Enhancement, LLC
8799 Gull Road, Richland, MI 49083
800-588-5805 www.ThinkAlcott.com

Now also serving
Grand Rapids, MI



processing and cognitive enhancement



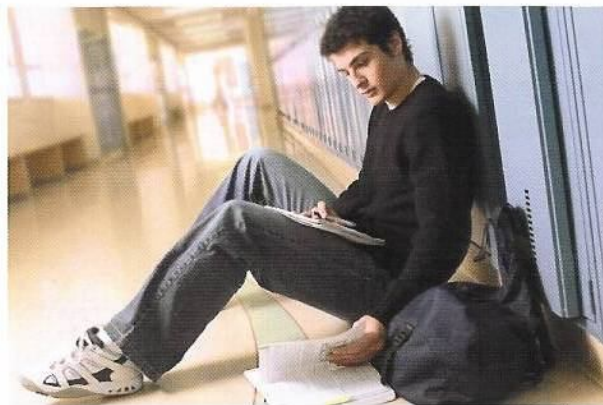
How can PACE help a child who struggles with learning?

Does Your Child Struggle?

Is your child having problems in school? Does he/she have difficulty listening, following directions, or doing homework? He/she may fight frustration every day and may even have been called lazy, unmotivated, or "a student at risk..."

If this has been said about your child, the real problem may not be a lack of motivation or proper instruction. Rather, he/she may lack sufficient processing skills. In other words, your child may be able to see or hear information, but cannot identify, interpret, comprehend, remember, or stay on task.

If you have a struggling student in your family, call us. The expertise of skilled professionals is required to identify and treat learning difficulties such as these. Our Processing and Cognitive Enhancement (PACE) program is an intense, proven training method that strengthens underlying cognitive skills. We train the entire learning system to function properly.



How Does A Processing Problem Affect A Child?

Young children want to be successful in school. They want to be liked and accepted. Naturally, they cannot understand why learning is so difficult for them when it isn't for their classmates. They feel that something is wrong with them, and it's not getting better. **To a struggling child, this is devastating.** Most parents are at a loss as to what to do. They have examined all ordinary physical and social reasons for his behavior.

What the struggling student often really needs is a program like PACE. PACE will uncover the processing skills that are not sufficient for proper learning, and will train and strengthen them so that they are properly developed. Without these skills, it will be almost impossible for an individual to learn and succeed even with extensive tutoring. Children who lack processing skills tend to avoid their schoolwork because it is difficult, discouraging, and frustrating. It's safe to predict that a child like this is already a potential dropout at age nine.

Could Your Child Be At Risk?

PACE can identify and successfully treat learning problems that are often reflected in the following behaviors:

- Is unable to sit still.
- Cannot stay on task for any length of time and is easily distracted
- Avoids work that seems complicated or hard.
- Has difficulty comprehending and remembering.
- Has problems sounding out words.
- Does written work very slowly.
- Often fails to complete a task.
- Has difficulty copying material.
- Constantly looks up and down.
- Often needs instructions repeated.
- Has troubles reading and spelling.
- Makes reversals. For example: confusing the words "was" and "saw" or the letters "b" and "d."
- Is disorganized and frustrated when studying.
- Makes frequent, "careless" errors.

PACE May Be The Very Answer You Seek

If your child exhibits one or more of these behaviors, call today to schedule a screening to evaluate your child's cognitive processing skills. It could be the most important phone call you will make during his or her school years.

